

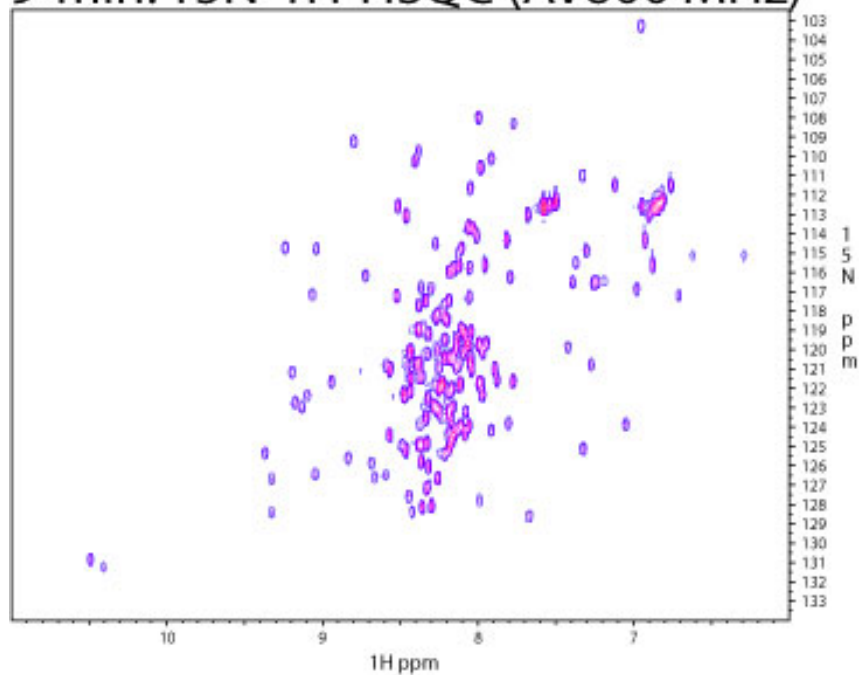


The University of Kansas  
NIH Center of  
Biomedical Research Excellence in  
Protein Structure and Function

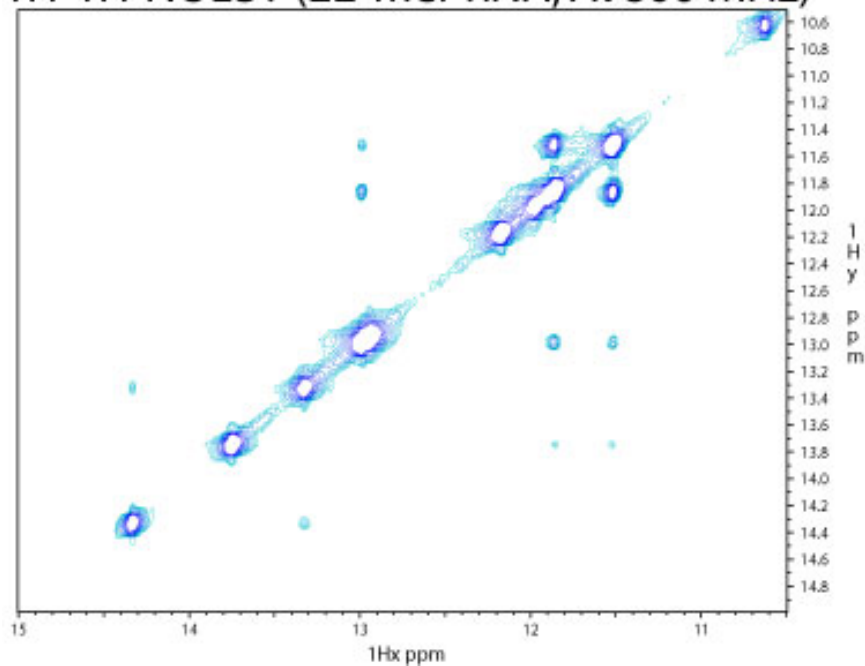
## COBRE BioMolecular Laboratory

Spectral data of various proteins and RNA recently analyzed on our 800 and 600 MHz spectrometers

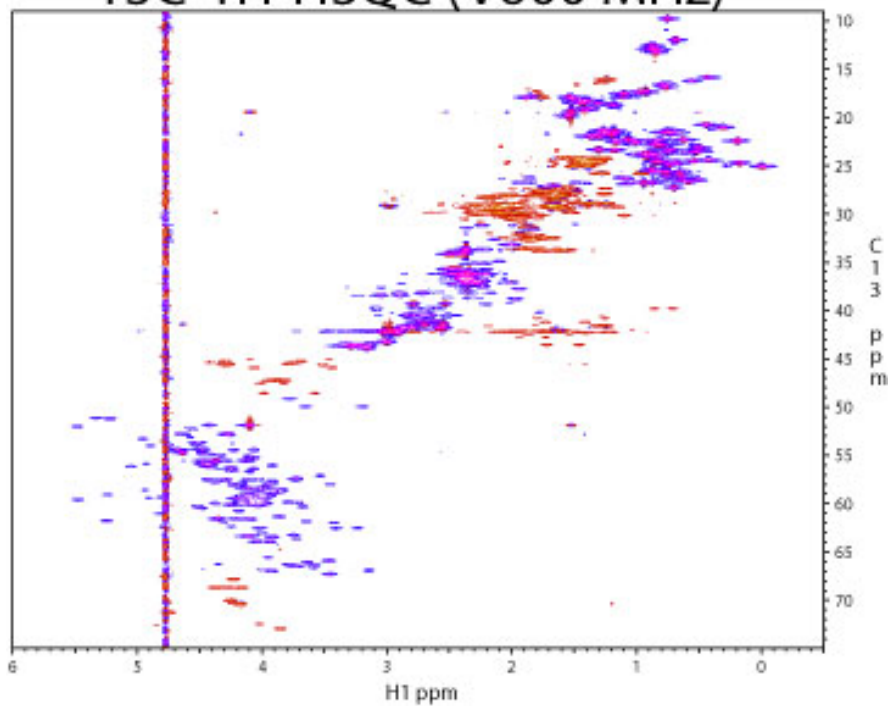
9-min.  $^{15}\text{N}$ - $^1\text{H}$ -HSQC (AV800 MHz)



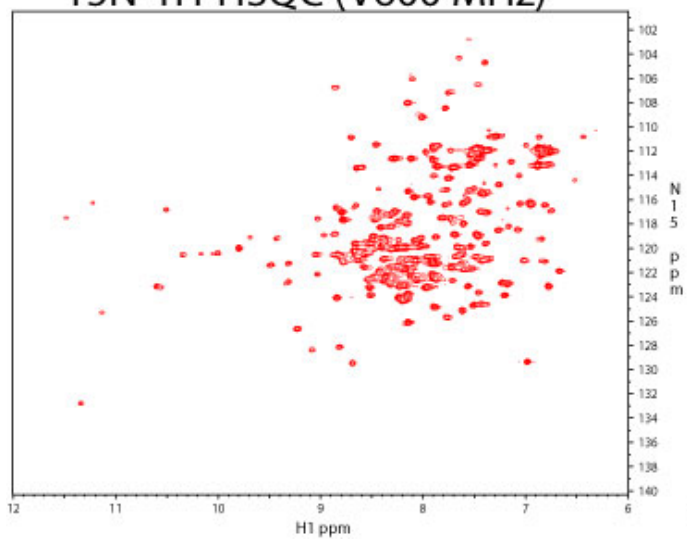
$^1\text{H}$ - $^1\text{H}$ -NOESY (22-mer RNA; AV800 MHz)



**$^{13}\text{C}$ - $^1\text{H}$ -HSQC (V600 MHz)**



**$^{15}\text{N}$ - $^1\text{H}$ -HSQC (V600 MHz)**



**Clean SEA-HSQC (V600 MHz)**

