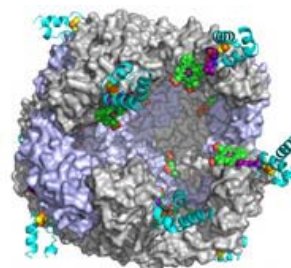


Fragment-based Drug Design Workshop

Pharmacy Building, KU West Campus

Tuesday, June 11, 2013

8:00 a.m.- 4:30 p.m.



Registration is free through June 4, 2013

Please sign up at <http://psf.cobre.ku.edu/>

We invite biochemists, microbiologists and others who may be working with potential "target" proteins to learn more about the concepts of Fragment-based Drug Design, and to explore the potential of collaborating with our COBRE core research laboratories to apply this method to their proteins and the biological systems in which they function.

Plenary Lectures

Andrew M. Petros, Ph.D., Associate Research Fellow
Abbvie, Chemical Technologies and Outsourcing, North Chicago, IL

Doug Davies, Ph.D., Senior Project Leader
Emerald Bio, Bainbridge Island, WA

Regional Speakers

Paul Belcher, Ph.D., GE Healthcare, Piscataway, NJ

Roberto De Guzman, Ph.D., University of Kansas, Lawrence, KS

Brian Geisbrecht, Ph.D., University of Missouri-Kansas City, Kansas City, MO

Mario Rivera, Ph.D., University of Kansas, Lawrence, KS

At this time we invite regional scientists who have interesting and potentially "FBDD-ready" proteins who are willing to present the "what" and "why" of those proteins(s) to submit an abstract for an oral presentation before **Friday, May 24, 2013**.

Poster Session

We encourage those attending to present posters at the afternoon Poster Session. Abstracts not selected for an oral presentation will be considered for the poster session. Poster abstracts should be submitted no later than Tuesday, **June 4, 2013**.

Other workshop activities will include a roundtable discussion and serial sessions on FBDD research techniques.



Sponsored by the
KU NIH Center of Biomedical Research Excellence (COBRE) in
Protein Structure and Function